

F. Atlee Dodge

Aircraft Services, LLC.

6672 Wes Way - Anchorage, AK 99518 - Phone: (907) 344-1755 - Fax: (907) 344-6720
Email: atleedodge@acsalaska.net - Website: www.fadodge.com

UNDER SEAT BATTERY RACK

FOR: PA-18, PA-19

P/N: 3304

STC: SA02156AK

United States Of America
Department of Transportation - Federal Aviation Administration
Supplemental Type Certificate

Number SA02156AK

This Certificate issued to F. Atlee Dodge Aircraft Services, Inc.
P.O. Box 190409
Anchorage, AK 99519-0409

certifies that the change in the type design for the following product with the limitations and conditions therefor as specified hereon meets the airworthiness requirements of Part 3 of the Civil Air Regulations.

Original Product Type Certificate Number: 1A2
Make: Piper
Model: PA-18 Series; PA-19 Series

IS AUTHORIZED
TO INSTALL STC
ON A MODEL
REFERENCE
S/N
USE ONLY
AUTHORIZED BY F. ATLEE DODGE
SIGNATURE
(SIGNATURE MUST BE SIGNED IN GREEN INK AND HAVE RAISED SEAL)

Description of Type Design Change: Fabrication and installation of a lightweight battery rack under the pilot's seat in accordance with F. Atlee Dodge Master Data List 3304, dated April 21, 2000, or later FAA approved revision.

Limitations and Conditions: Compatibility of this design change with previously approved modifications must be determined by the installer

If the holder agrees to permit another person to use this certificate to alter the product, the holder shall give the other person written evidence of that permission.

This certificate and the supporting data which is the basis for approval shall remain in effect until surrendered, suspended, revoked or a termination date is otherwise established by the Administrator of the Federal Aviation Administration.

Date of application: December 07, 1998

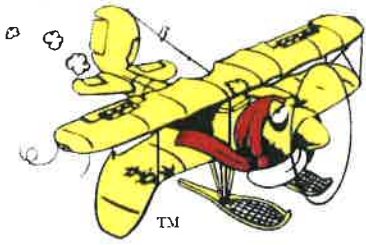
Date reissued:

Date of issuance: April 21, 2000

Date amended:



By direction of the Administrator
REFERENCE
James P. Holt
FOR (Signature)
Gregory J. Holt
Manager
Anchorage Aircraft Certification Office
USE ONLY
(Title)



F. Atlee Dodge Aircraft Services, LLC.



6672 Wes Way - Anchorage, AK 99518 - Phone: (907) 344-1755 - Fax: (907) 344-6720
Email: atleedodge@acsalaska.net - Website: www.fadodge.com

APRIL 7, 1999
SHEET 1 of 2

INSTALLATION INSTRUCTIONS FOR:
UNDER SEAT BATTERY RACK

FOR: PA-18, PA-19

P/N: 3304

1. Remove the seat from the seat base by first removing the stop pin located on the rear left side of the seat track (clevis pin).
2. Remove the front stick. Release the seat lock and slide the seat forward off of the seat base.
3. Position the battery rack in the seat base as shown on drawing, evenly spaced from side to side.
4. At the AFT flange of the battery rack and the AFT cross tube of the seat base, lay out for 6ea. rivets. Drill #30 holes. Remove the rack and deburr holes in the battery rack. Reinstall and rivet in place. Use blind rivets supplied in kit SB4-2.
5. Install the 1/2" clamp on the diagonal tube on each side of the seat. Match clamp to the bracket 3304-6 and drill a 1/4" hole using the clamp as a drill guide. Install the AN-45A bolt, MS20365-428 nut and AN960-416 washers, as required. Repeat on the other side. Torque per 43.13-1A, Chapter 5, Section I.
6. Reinstall the seat and reinstall stop pin and safety. Install the stick and secure it with bolt and nut previously removed.
7. Refer to 43.13-1A, Chapter 11 of electrical installation.
8. It will be necessary to install a FAA/PMA battery that measures 7 3/16" long x 3 1/16" wide x 6 9/16" high. Add the weight of the battery with the weight of the rack of 1 lb. 6 oz. at Fuselage Station 34. (max WT 16 LBS.)

Make out 337 and refer to STC

NOTE: Fuselage stations are measured from the firewall.

NOTE: USE OF ODYSSEY PC680 DRY CELL BATTERY P/N SBS J16 WILL INSTALL IN THIS APPLICATION.

BATTERY RACK 3304

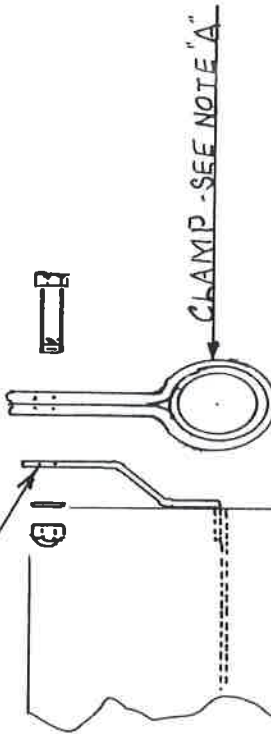
STRAP 3304-8

BATTERY

SEAT BASE 12268-18

BRACKET 3304-6

BRACKET 3304-6



NOTES

"A" CLAMP-SPECIAL, FABRICATED
FROM 1016 X.058 MATERIAL

HARDWARE KIT

3304 BATTERY RACK
2 ea 1/2 in. SPECIAL CLAMP
2 ea AN3-5A BOLT
2 ea MS 20365-428 NUT.
AS NEEDED AN 960-416 WASHERS
6 ea SB4-2 RIVETS (MORISON)

REFERENCE

**BATTERY RACK
USE ONLY**

BATTERY RACK TO BE INSTALLED UNDER A PIPER SEAT BASE ASSY P/N 12268-18

12-4-98

DATE

F. Little Dodge

AIRCRAFT AFFECTED PIPER PA-188-19

SHEET 1 of 1 DWG No. 3304-I