

***F. Atlee Dodge***  
**Aircraft Services, LLC.**

6672 Wes Way - Anchorage, AK 99518 - Phone: (907) 344-1755 - Fax: (907) 344-6720  
Email: [atleedodge@acsalaska.net](mailto:atleedodge@acsalaska.net) - Website: [www.fadodge.com](http://www.fadodge.com)

**INSTALLATION INSTRUCTIONS FOR:**

**AIRCRAFT TIE DOWN BRACKET ASSEMBLY**

FOR: PA-12

P/N: 3197

STC: SA02067AK

United States Of America  
Department of Transportation - Federal Aviation Administration  
**Supplemental Type Certificate**

*Number* SA02067AK

*This Certificate issued to* F. Atlee Dodge Aircraft Service  
P.O. Box 190409  
Anchorage, AK 99519-0409

*certifies that the change in the type design for the following product with the limitations and conditions therefor as specified hereon meets the airworthiness requirements of Part 03 of the Civil Air Regulations.*

*Original Product Type Certificate Number:* A-780  
*Make:* Piper  
*Model:* PA-12; PA-12S

*Description of Type Design Change:* Fabrication of Aircraft Tiedown Bracket Assembly (P/N 3197) in accordance with F. Atlee Dodge Drawing No. 3197P dated 5/29/95, or later FAA approved revision, and installation in accordance with F. Atlee Dodge Drawing No. 3197A Sheets 1 and 2 dated 2-12-87, or later FAA approved revision.

*Limitations and Conditions:* Compatibility of this design change with previously approved modifications must be determined by the installer.

*This certificate and the supporting data which is the basis for approval shall remain in effect until surrendered, suspended, revoked or a termination date is otherwise established by the Administrator of the Federal Aviation Administration.*

*Date of application:* February 17, 1987

*Date reissued:*

*Date of issuance:* January 24, 1997

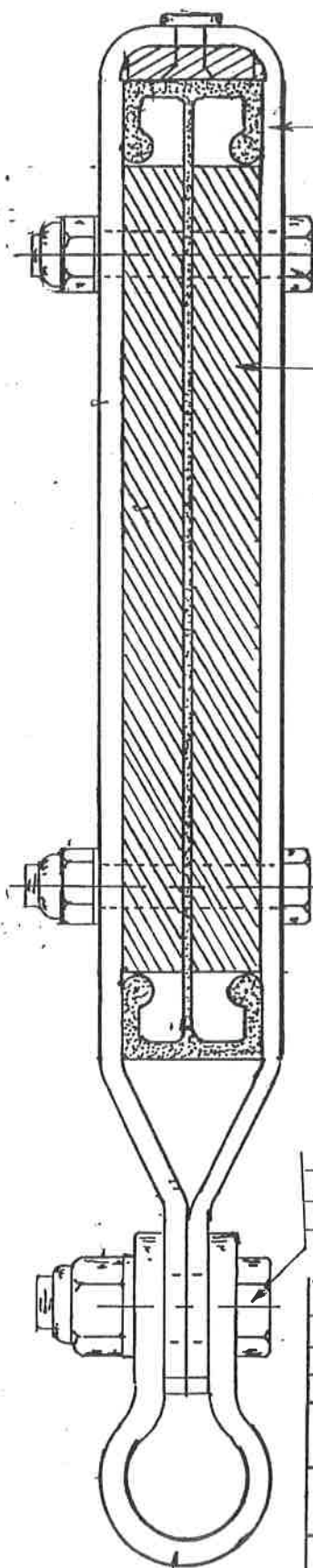
*Date amended:*



**REFERENCE USE ONLY**  
*By direction of the Administrator*  
*Michael K. Dahl*  
(Signature)  
Michael K. Dahl  
Manager  
Anchorage Aircraft Certification Office  
(Title)

Any alteration of this certificate is punishable by a fine of not exceeding \$1,000, or imprisonment not exceeding 3 years, or both.

IS AUTHORIZED  
TO INSTALL STC \_\_\_\_\_  
ON A \_\_\_\_\_ MODEL \_\_\_\_\_  
N \_\_\_\_\_  
S/N \_\_\_\_\_  
**REFERENCE USE ONLY**  
AUTHORIZED BY F. ATLEE DODGE  
AIRCRAFT SERVICES LLC  
SIGNATURE \_\_\_\_\_  
(SIGNATURE MUST BE SIGNED IN GREEN INK  
AND HAVE RAISED SEAL)



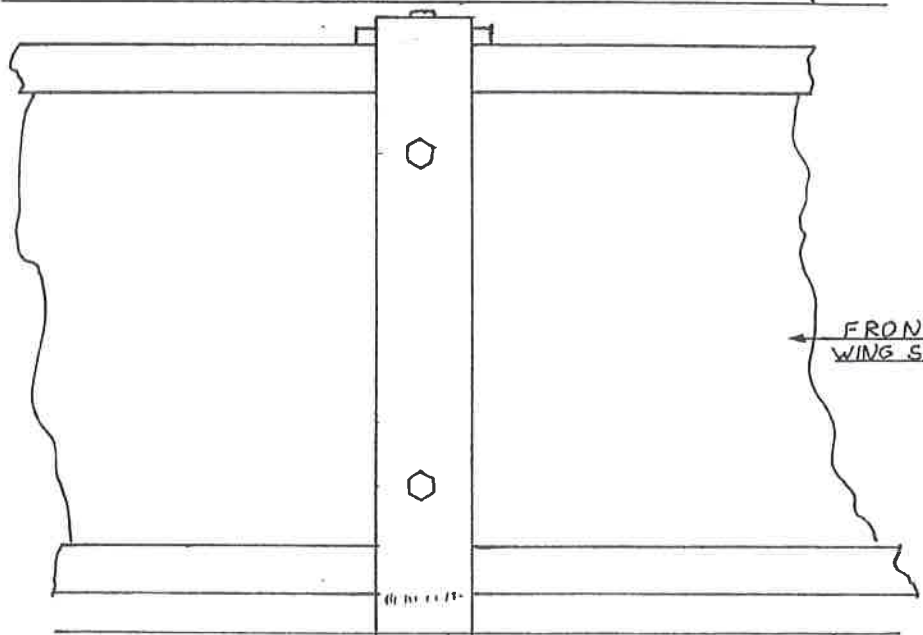
WING STA.  $125 \pm 1''$

BRACKET

- AN 3-14A
- AN 960-10
- AN 365-1032
- TYP 2 PLACES
- AN 960-10 WASHERS QUANTITY AS REQUIRED

SPACER

FABRIC



FRONT WING SPAR

FABRIC

- AN 6-11A
- AN 960-616 AS REQ.
- AN 365-624

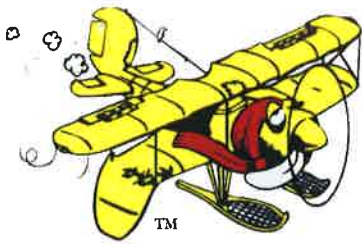
STEEL RING


LET	DATE	DESCRIPTION	BY	APP
TOL		AIRCRAFT TIEDOWN BRACKET		
SCALE		INSTALLATION		
F ATLEE DODGE P.O.B. 190409 ANCHORAGE, AK. 99519	2-12-87	DWG F Atlee Dodge		CHG.

MS 20115-F8  
SHACKLE & HARDWARE NOT INCLUDED IN KIT.

**REFERENCE USE ONLY**

3197A SHEET 1 OF 2



*F. Atlee Dodge* Aircraft Services, LLC.



6672 Wes Way - Anchorage, AK 99518 - Phone: (907) 344-1755 - Fax: (907) 344-6720  
Email: atleedodge@acsalaska.net - Website: www.fadodge.com

February 21, 1987  
3197 A Sheet 2 of 2

INSTALLATION INSTRUCTIONS FOR:

**F. ATLEE DODGE AIRCRAFT TIEDOWN BRACKET ASSEMBLY**

FOR: PA-12, PA-18

P/N: 3197

1. Location of the aircraft tie down bracket to be installed on the wing front spar wings, PA-11 and PA-18's. Measure outbound from the first rib 125".
2. Locate the PA-12 and 14 aircraft tie downs, outboard of the first rib outboard of lift strut attach.
3. Cut access in upper wing skin large enough to gain access to install bracket over the spar. A small cutout in the lower skin is necessary to allow tie down bracket to protrude through the wing lower surface. To gain access through lower surface of the wing is through existing inspection holes, or an additional inspection hole may be installed.
4. Install the tie down by spreading the bracket and straddling the spar. Install the spacers between the bracket and the spar web, front and rear.
5. Align previously drilled holes and install the bolts, nuts and washers. Torque to 25/30 lbs.
6. For spars not previously drilled, use the aircraft tie down bracket as a drill guide using a #11 drill.
7. If a shackle AN-155-8 & ring are to be installed, install AN6-12 bolt, nut and washer. Tighten so the bracket closes and shackle is only snug. (Not supplied in kit.)
8. Install a fabric repair cutout in the upper skin surface. Suggest a reinforcing doubler to be installed around the tie down bracket on the lower skin. Use a fabric or plastic doubler. Refer to AC43.13 A, Section 2 and 3 for fabric and doping process.
9. Make proper log book entry, fill out FAA Form 337. Negligible weight and balance change.