

EXTENDED BAGGAGE INSTALL INSTRUCTIONS:

1. INSTALL INSTRUCTIONS

- a. REMOVE AFT PIECE OF STOCK BAGGAGE COMPARTMENT.
- b. LOCATE P/N JK90003-001,002,003 AT FUSELAGE STATIONS 90.5, 111.25, AND 131.75 RESPECTIVELY, AS PER DWG 6201.
- c. LOCATE LEFT AND RIGHT PIECES OF P/N J11408-015 AS PER DWG 6201.
- d. LOCATE P/N J11408-012 AS PER DWG 6201.
- e. WELD AS PER DWG 6201.
- f. ATTACH BACK PANEL ATTACHMENT TABS (P/N 6201-01) AS PER DWG 6201.
- g. ATTACH D-RINGS (P/N 488557-14) AS PER DWG 6201.
- h. IT IS RECOMMENDED THAT THIS INSTALLATION BE DONE AT THE TIME OF AIRCRAFT REBUILD DUE TO THE NECESSITY OF MAJOR WELDING AND FABRIC REMOVAL.
- i. FLOOR OF EXTENDED BAGGAGE SHALL BE MADE OF 2024-T3 WITH A MINIMUM THICKNESS OF .020" OR SIMILAR MATERIAL.
- j. A BACK PANEL MUST BE INSTALLED THAT EXTENDS FROM THE FLOOR OF THE EXTENDED BAGGAGE COMPARTMENT TO THE TABS LOCATED AT FUSELAGE STATION 143.25 (2024-T3, MINIMUM THICKNESS OF .020 OR SIMILAR MATERIAL).
- k. A PLACARD MUST BE ADDED TO THE FORWARD AREA OF THE EXTENDED BAGGAGE TO DENOTE THE 10 LB MAXIMUM LOAD.

2. NOTES

- a. REFER TO AC43.13-1B FOR CURRENT WELDING AND CORROSION PRACTICES.

P/N	DESCRIPTION	QTY
488557-14	D-RING	4
6201-01	TAB	2
J11408-015	SIDE ANGLE	2
J11408-012	AFT ANGLE	1
JK90003-001	SUPPORT	1
JK90003-002	SUPPORT	1
JK90003-003	SUPPORT	1

CHG	DATE	DESCRIPTION	BY	CHK
B	9-30-14	ADD D-RINGS	GH	SK
A	8-29-14	ADD NOTE K	GH	SK
-	8-6-14	INITIAL	GH	SK

F. ATLEE DODGE AIRCRAFT SERVICES, LLC

6672 Wes Way
 ANCHORAGE AK. 99518
 (907) 344-1755 / Fax (907) 344-6720
 Atleedodge@acsalaska.net



The drawings, specifications, Descriptions, and other critical data attached hereto are property of F. Atlee Dodge Aircraft Services, LLC. No disclosures to others, within the United States of America or abroad, or reproduction of any part of the information supplied is to be released without written authorization from F. Atlee Dodge Aircraft Services LLC.

PA-18 EXTENDED BAGGAGE

ALL LINEAR DIMENSIONS IN INCHES

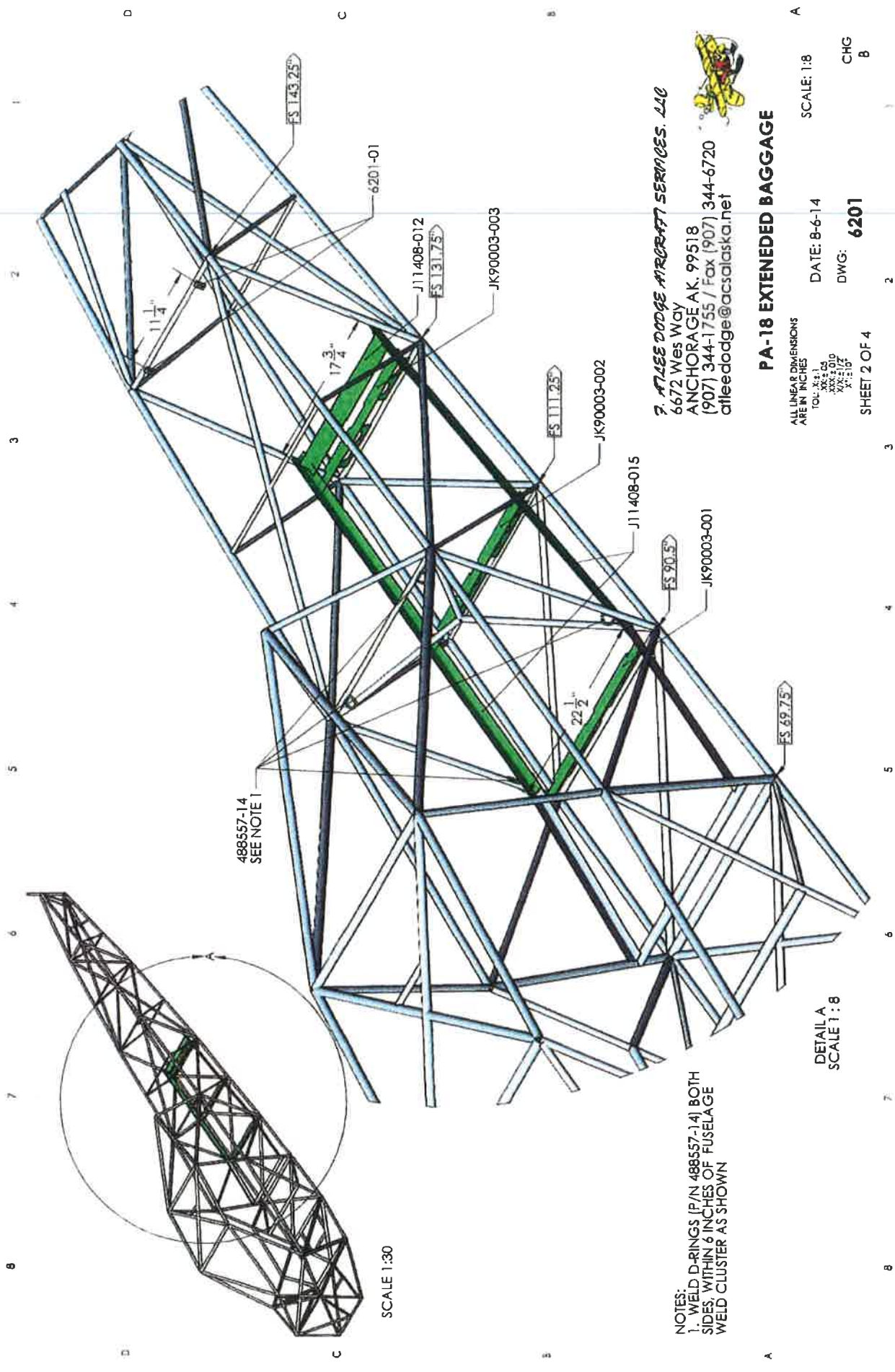
F ATLEE DODGE

DATE: 8-6-14

DWG:

6201

CHG
B



NOTES:
 1. WELD D-RINGS (P/N 488557-14) BOTH SIDES WITHIN 6 INCHES OF FUSELAGE WELD CLUSTER AS SHOWN

SCALE 1:30

DETAIL A
 SCALE 1:8

7. ATLAS DODGE AIRCRAFT SERVICES, LLC
 6672 WES WAY
 ANCHORAGE AK, 99518
 (907) 344-1755 / Fax (907) 344-6720
 atlasdodge@acsalaska.net

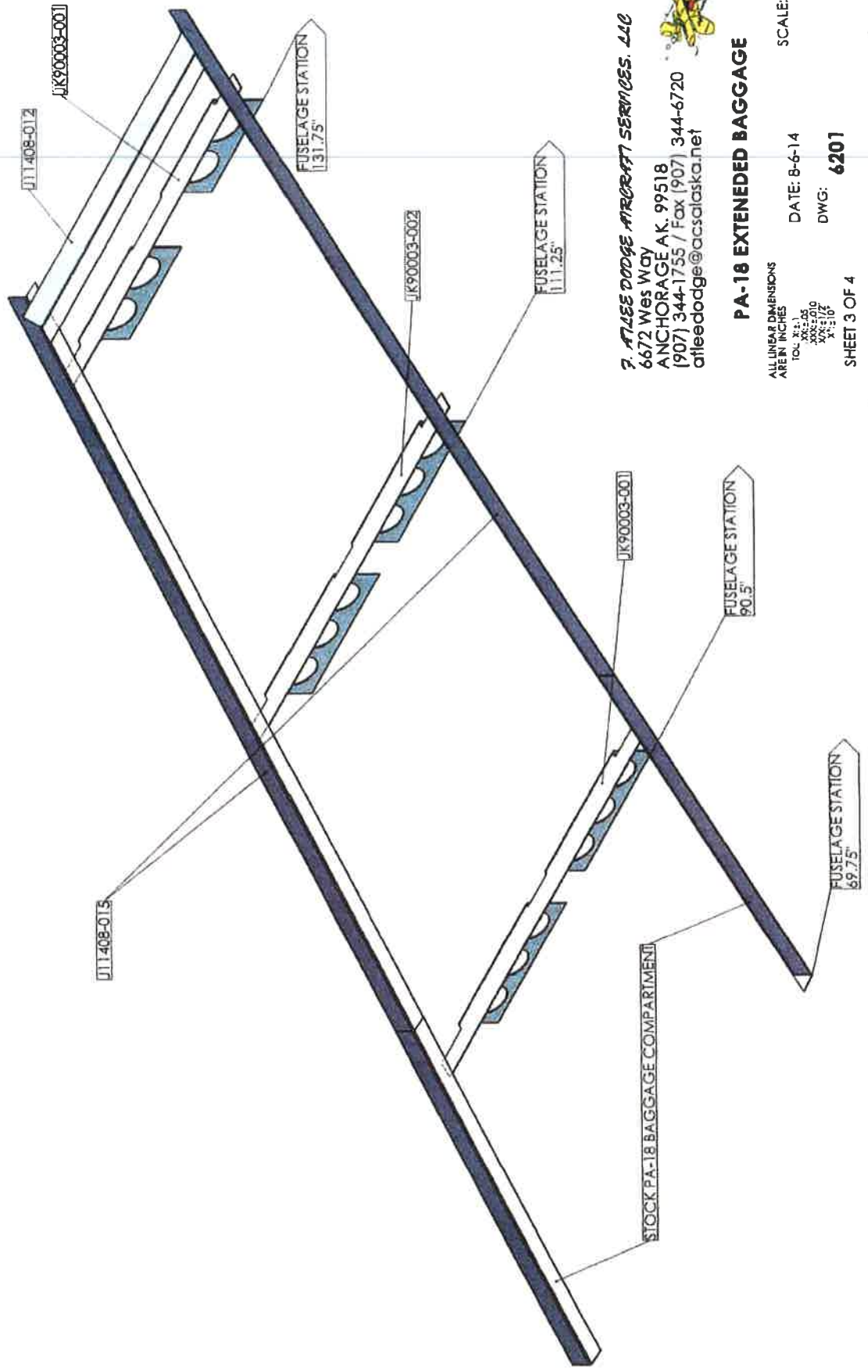


PA-18 EXTENDED BAGGAGE

ALL LINEAR DIMENSIONS ARE IN INCHES
 TOL: X±.1
 XX±.04
 XXX±.010
 XXX±.05
 SCALE: 1:8
 DATE: 8-6-14
 DWG: **6201**
 SHEET 2 OF 4

CHG B

1 2 3 4 5 6 7 8



P. ATLEE DODGE AIRCRAFT SERVICES, LLC
 6672 Wes Way
 ANCHORAGE AK. 99518
 (907) 344-1755 / Fax (907) 344-6720
 atleedodge@acsalaska.net



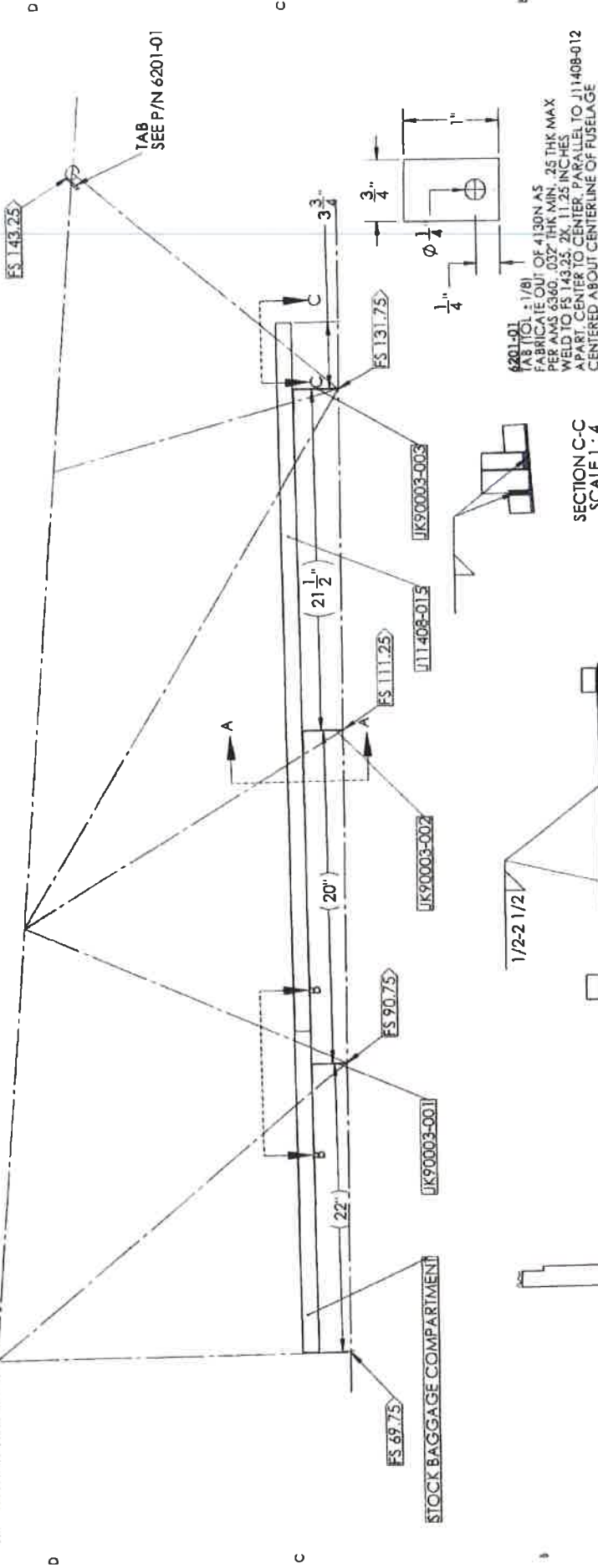
PA-16 EXTENDED BAGGAGE

ALL LINEAR DIMENSIONS
 ARE IN INCHES
 TOL: X1:1.05
 XXX=0.10
 X1=0.10
 X2=0.10
 SHEET 3 OF 4

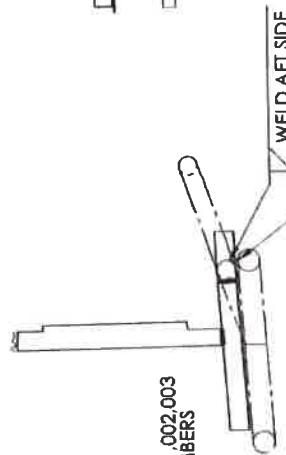
SCALE: 1:4
 DATE: 8-6-14
 DWG: 6201
 CHG B

1 2 3 4 5 6 7 8

NOTE:
 1. DASHED LINES REPRESENT FUSELAGE TUBES
 2. WELDS TYP OF BOTH SIDES
 3. DIMENSIONS FOR REFERENCE ONLY

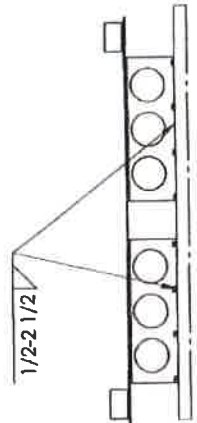


WELD JK90003-001,002,003
 TO VERTICAL MEMBERS



SECTION B-B
 SCALE 1:6

WELD J11408-015
 TO VERTICAL TUBES



SECTION A-A
 SCALE 1:6
 TO SHOW WELDS
 TYP OF JK90003-001,002,003



SECTION C-C
 SCALE 1:4

6201-01
 TAB TOL ± 1/8"
 FABRICATE OUT OF 4130N AS
 PER AMS 6360, .032" THK MIN, .25 THK MAX
 WELD TO FS 143.25, 2X, 11.25 INCHES
 APART, CENTER TO CENTER, PARALLEL TO J11408-012
 CENTERED ABOUT CENTERLINE OF FUSELAGE

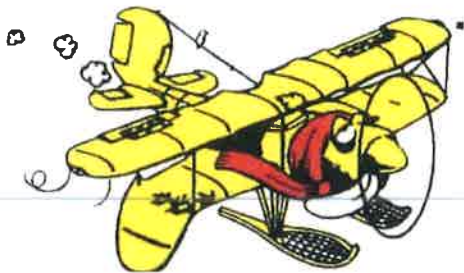
7. ATLEE DODGE AIRCRAFT SERVICES, LLC
 6672 Wes Way
 ANCHORAGE AK, 99518
 (907) 344-1755 / Fax (907) 344-6720
 atleedodge@acsalaska.net



PA-18 EXTENDED BAGGAGE

ALL LINEAR DIMENSIONS
 ARE IN INCHES
 TOL. X:±.1
 Y:±.05
 Z:±.1/2"
 X°:±10°
 SCALE: 1:6
 DATE: 8-6-14
 DWG: **6201**
 SHEET 4 OF 4

CHG
 B



F. Atlee Dodge Aircraft Services, LLC

6672 Wes Way * Anchorage, Alaska 99518

Phone: (907) 344-1755 * Fax: (907) 344-6720

atleedodge@acsalaska.net ~ www.fadodge.com

INSTRUCTIONS FOR CONTINUED AIRWORTHINESS

for

FADodge Extended Baggage

On the

Piper PA 18 Super Cub

Document Number: ICA 6201

RETAIN THIS DOCUMENT WITH THE AIRCRAFT RECORDS

REVISION HISTORY

Revision	Description	Date
IR	Initial Release (IR)	22 May 2014

For updated revisions of this document it is the owner/operators responsibility to contact F. Atlee Dodge Aircraft Services, LLC. through our website or directly at the numbers given above.

This document meets the requirements of 14 CFR 23.1529 (Appendix G). It is found acceptable to the FAA in accordance with the guidelines outlined in FAA Order 8110.54.

Any Airworthiness Limitations are FAA Approved and must be followed for all installations.

F. Atlee Dodge Aircraft Services, LLC.
Anchorage, AK

TABLE OF CONTENTS

1	Model Applicability	3
2	Modification Description	3
2.1	Illustrated Parts	3
3	Installation.....	3
4	Maintenance Instructions	3
4.1	Inspection Requirement.....	3
5	Airworthiness Limitations	4

Information contained herein is the property of F. Atlee Dodge Aircraft Services, LLC. Copy or reproduction, manual or electronic, is not authorized without prior written consent.	Doc. No.:	6201
	Revision:	IR
	Date:	May 22 2014
	Page	2 of 4

1 Model Applicability

The data presented in this Instruction for Continued Airworthiness (ICA) is intended to augment the information contained in the original aircraft maintenance manual or structural repair manual. Additional information on acceptable methods, techniques, and practices for inspection, repair, and alteration can be obtained from a current version of FAA Advisory Circular (AC) 43.13-1B/2B.

This document is applicable to the Makes and Models outlined in the FAA Approved Model List (AML) 6201.

2 Modification Description

The extended baggage area consists of a 4130 steel support frame welded in place, a floor made of 2024-T3 aluminum, and an aluminum back panel extending from the floor to 4130 steel tabs welded in place on the fuselage. The area will be approximately 70 inches long and 24 inches wide at the front, tapering to 18 inches wide at the rear. The compartment will be rated for 10 pounds.

2.1 Illustrated Parts

The extended baggage area is illustrated in FADodge DWG 6201.

3 Installation

Refer to FADodge DWG 6201 for illustrated installation instructions.

4 Maintenance Instructions

If repairs are required to the FADodge extended baggage area, contact F. Atlee Dodge Aircraft Services, LLC by telephone at 907-344-1755.

4.1 Inspection Requirement

The FADodge extended baggage area should be inspected, for wear, damage or deformation on a 100HR/annual or progressive basis in accordance with the applicable maintenance manual.

Information contained herein is the property of F. Atlee Dodge Aircraft Services, LLC. Copy or reproduction, manual or electronic, is not authorized without prior written consent.	Doc. No.:	6201
	Revision:	IR
	Date:	May 22 2014
	Page	3 of 4

F. Atlee Dodge Aircraft Services, LLC.
Anchorage, AK

5 Airworthiness Limitations

The Airworthiness Limitations Section is FAA approved and specifies maintenance required under Secs. 43.16 and 91.403 of the Federal Aviation Regulations unless an alternate program has been FAA approved.

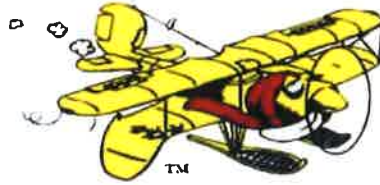
No additional airworthiness limitations have been imposed by this modification.

This modification does not affect the airworthiness section of the FAA Approved Maintenance Manual.

ALS Approved: _____
August A. Asay
Manager
Anchorage Aircraft Certification Office

---END---

Information contained herein is the property of F. Atlee Dodge Aircraft Services, LLC. Copy or reproduction, manual or electronic, is not authorized without prior written consent.	Doc. No.:	6201
	Revision:	IR
	Date:	May 22 2014
	Page	4 of 4



F. Atlee Dodge Aircraft Services, LLC.

6672 Wes Way • Anchorage, AK 99518 • Phone: (907) 344-1755 • Fax: (907) 344-6720

email: atleedodge@acsalaska.net • website: www.fadodge.com

NOTICE:

It is up to the installer to determine sufficient clearance between the trim cables and the extended baggage compartment. It may be necessary to install a second set of trim pulley idler tabs aft of the original idler tabs. It may also be necessary to realign the original aft pulley tabs. Please feel free to contact F. Atlee Dodge Aircraft Services with any questions.