

F. Atlee Dodge Aircraft Services, Inc.

P.O. BOX 190409 • ANCHORAGE, ALASKA 99519-0409

PHONE (907) 344-1755 • FAX (907) 344-6720

Document No: 3285 I
Revision: NONE
Date: April 7, 2005
Page: 1 of 1
For Installations Instruction
Sheet 5 of 5

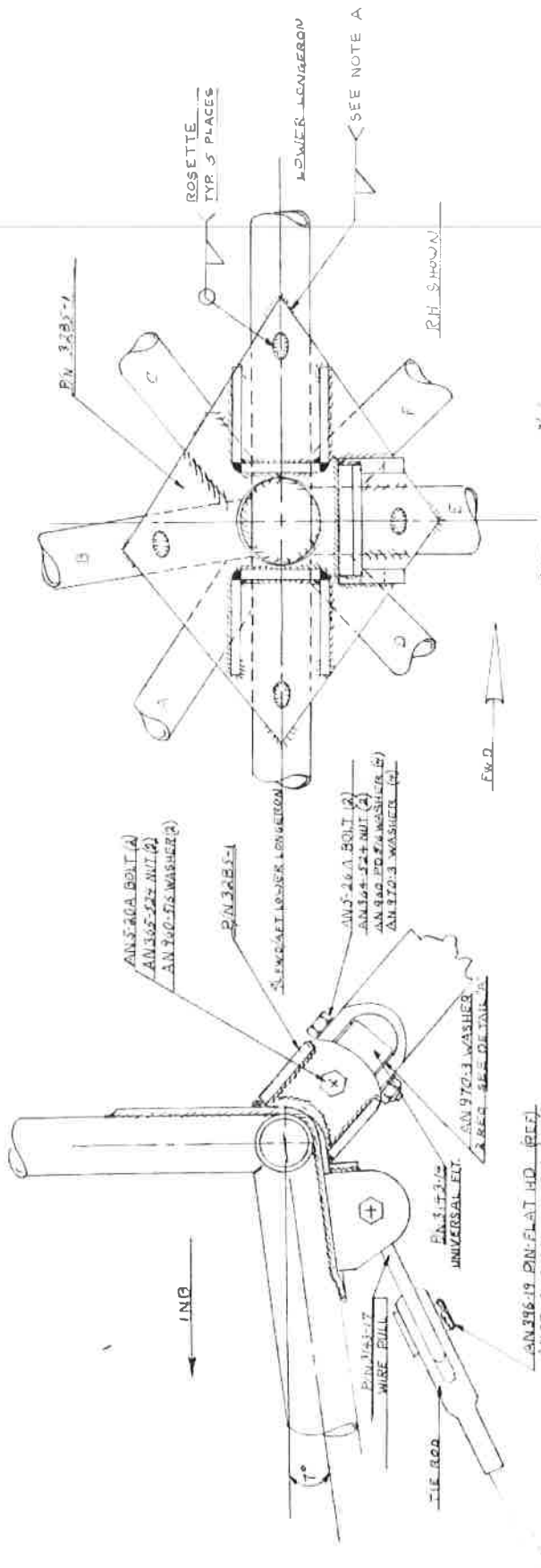
F. Atlee Dodge Installation Instructions **F. Atlee Dodge Maul Weld on Float Fittings P/N 3285-1** **Maul Aircraft Models M5-180 - M6-235 - MX7-180 and MX7-235**

- 1 Instruction is based on fuselage is uncovered and affected area to be welded on Fuselage has been prepared to accept weld on Float Fittings and tubing determined to be in air worthy condition.
- 2 All welding shall be done in accordance with AC43.13-1B Change 1 Dated September 27, 2001 Chapter 4. Section 5
- 3 On Maul Aircraft models M5 - M6 - M7 and MX7 the fuselage STA to accept weld on , Float Fittings shall be station, see table below. Note if aircraft service or parts manual is not available measurements start at Firewall to locate fuselage stations.
- 4 Align appropriate Float Fitting (LH or RH) centerline, with the centerline of lower longeron weld cluster at fuselage station location, see table below, then clamp securely in place. Note: Rosette hole should be on C/L on tubing.

MAULE MODELS INCHES FROM FIREWALL

R.H.	M5, M6, MX7	72 3/8"
L.H.		72 3/8"
R.H.	M7	72 1/8"
L.H.		72 1/8"

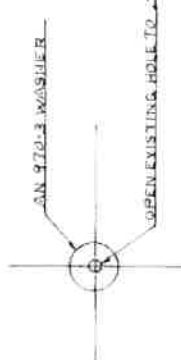
- 5 Refer to AC43.13-1N Chapter 4 Section 5 Change 1 Date September 27, 2001. For correct welding techniques. Material composition of F Atlee Dodge Weld on Float Fittings P/N 3285 are 4130 N. Note wire pull attachment faces down and inboard for both RN & LH assemblies.
- 6 After welding is complete refer to AC43.13-1B Chapter 5 Section 1,2 and for welding inspection practices.
- 7 For corrosion protection refer to AC43.13-13 Chapter 6 Section 3.
- 8 Enter correct Log Book entries. Weight of LH & RH weld on floating with hardware wire pulls and swivel blocks is 3.6lbs. Update weight and balance records



EXISTING HOLES FROM PIPE WALLS
SEE INCHES REFERENCED

MODEL NUMBER	INCHES FROM PIPE WALL
RH MS, M6, M7	1.250
LH	1.276
RH M7	1.276
LH	1.316

- NOTES**
- A. WELD ANY PLACE CONTACT AS MADE BETWEEN THE FITTING AND TUBING. WELD ALL ROSETTES.
 - B. 1/2" FILLING 1/2" WIRE BULL ARE SUPPLIED WITH FLOAT FITTING 6' PRIMED W/ VARIUMINE SELF ETCHING PRIMER. VARIUMINE IS A R. PAK. ALL PART #169 W/ LAST 0/6 CONCRETE M. G. QUALITY.
 - C. MAKE FABRIC REPAIRS PER 2813/13/1A, C&S, SEC.



DETAIL A

MAJILE MODEL MS, M6, M7, M7

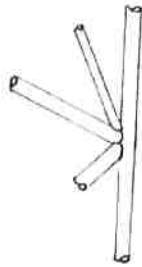
WELD ON AFT FLOAT FITTINGS

F. ATLEE DOOCE
DRAWING BY
DATE

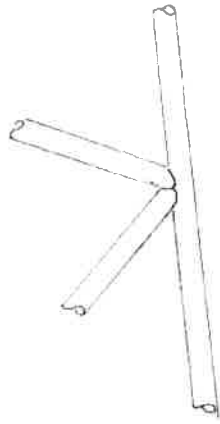
SCALE
NONE

DRAWING 3 of 5

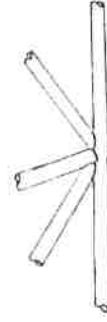
DWG 32851



Maule Model MX-7-235 s/n 10002C &
UP; MX-7-180 s/n 11001C UP.



Maule Models M5, M6, MX7.



Maule Model MX-7-180, 11002C & UP; MX-7-235, 10006C & up;
M5/M6-235, 7466C & up; M-5-180, 8046C & up.

F. G. G. G.
5-12-05

SHEET No. 32851

CHG