

***F. Atlee Dodge***

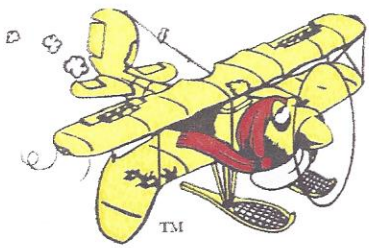
**Aircraft Services, LLC.**

6672 Wes Way - Anchorage, AK 99518 - Phone: (907) 344-1755 - Fax: (907) 344-6720  
Email: [atleedodge@acsalaska.net](mailto:atleedodge@acsalaska.net) - Website: [www.fadodge.com](http://www.fadodge.com)

**INSTALLATION INSTRUCTIONS FOR:**

**F. ATLEE DODGE FOLDING SEATS**

**CESSNA 170, 172, 175, 180, 182 & 185**



## F. Atlee Dodge Aircraft Services, LLC.



6672 Wes Way - Anchorage, AK 99518 - Phone: (907) 344-1755 - Fax: (907) 344-6720  
Email: atleedodge@acsalaska.net - Website: www.fadodge.com

### FORWARD

Thank you for purchasing F. Atlee Dodge Aircraft Services, LLC. Cessna Jump Seats. The installation instructions are a guideline to help assist your installation. As always over the years customers have offered constructive criticism. So before the installation starts I shall offer some highlights to assist you.

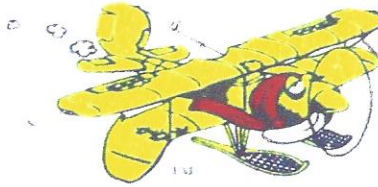
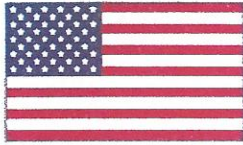
1. If you are not familiar with aviation hand tools, procedures or practices please retain a Licensed Airframe and Power Plant Mechanic.
2. Please Take Note: Any installation using F. Atlee Dodge seats in Cessna Aircraft, the AFT door post located at **Fuselage Station 65.33** has fuel lines routed inside the former. **EXTREME** care should be taken to avoid drilling holes in fuel lines when attaching the forward section of the slide rail and gusset.
3. Each airframe can have a slight variance in dimensions and rivet patterns. With that said our dimensions for seat elevation are not etched in stone!! On occasions slight modifications to the slide rails & supporting components are necessary.
4. Aircraft with float installation kits installed, some rivets might have to be removed & reinstalled with counter sunk rivets to help facilitate the seat installation.
5. **Do Not under any circumstances remove any structural member of the aircraft such as stringers, stiffeners, center seat belt support structures or any previously approved repair or alteration!!**

If you have any further questions, comments or critiques, please do not hesitate to call.

Respectfully,

Steve Kracke

General Manager



## *F. Atlee Dodge Aircraft Services LLC.*

6672 Wes Way • Anchorage, AK 99518 • Phone: (907) 344-1755 • Fax: (907) 344-6720

email: [atleedodge@acsalaska.net](mailto:atleedodge@acsalaska.net) • website: [www.fadodge.com](http://www.fadodge.com)

### **MANDATORY SERVICE BULLETIN**

DOCUMENT No. MSB 3187-I-01

Date: 10 July, 2013

#### **Subject:**

Visual inspection of F. Atlee Dodge Folding Seat installation in accordance with (IAW) STC No. SA02008AK.

#### **Reference:**

STC No. SA2008AK, Installation Instructions for F. Atlee Dodge Folding Seats (Cessna 170, 172, 175, 180, 182 & 185), Instruction Manual 3187-IM, Drawing No. 3187-I

#### **Models Affected:**

See FAA Approved Model List (AML) No. SA02008AK for Installation of F. Atlee Dodge Aircraft Services, LLC Model 3187 Folding Jump Seat, Amendment Level 8, Dated December 17, 2008.

#### **Statement of Difficulty:**

A report has been received that routing of the seat belts used in conjunction with installation of the folding jump seats has not been accomplished according to the approved STC configuration. This has been identified as a factor in a recent accident where the seat occupant was not held in the seat following a crash.

Spot checks revealed that many installations have deviated from the approved STC configuration. This mandatory service bulletin (MSB) serves to reinforce the need to adhere to the installation as outlined in STC No. SA02208AK and to conduct an inspection to verify the proper configuration.

#### **Compliance:**

Upon receipt of this service bulletin and prior to the next flight, a properly rated mechanic, the aircraft owner, or the aircraft operator must accomplish the following:

1. Verify the seat belt fitting (part no. 3189-44) is properly installed and the seat belt is routed through the fitting IAW DWG 3187-1, sheet 4 of 4, as seen in figure 1 below.
2. Verify the ends of the seat belt are attached to the slide rail and seat track using the tie-down rings and end fittings IAW DWG 3187-1, sheet 4 of 4, as seen in figure 1 below.

**Mandatory Service Bulletin**

MSB 3187-1-01

10 July, 2012

Page 1 of 2



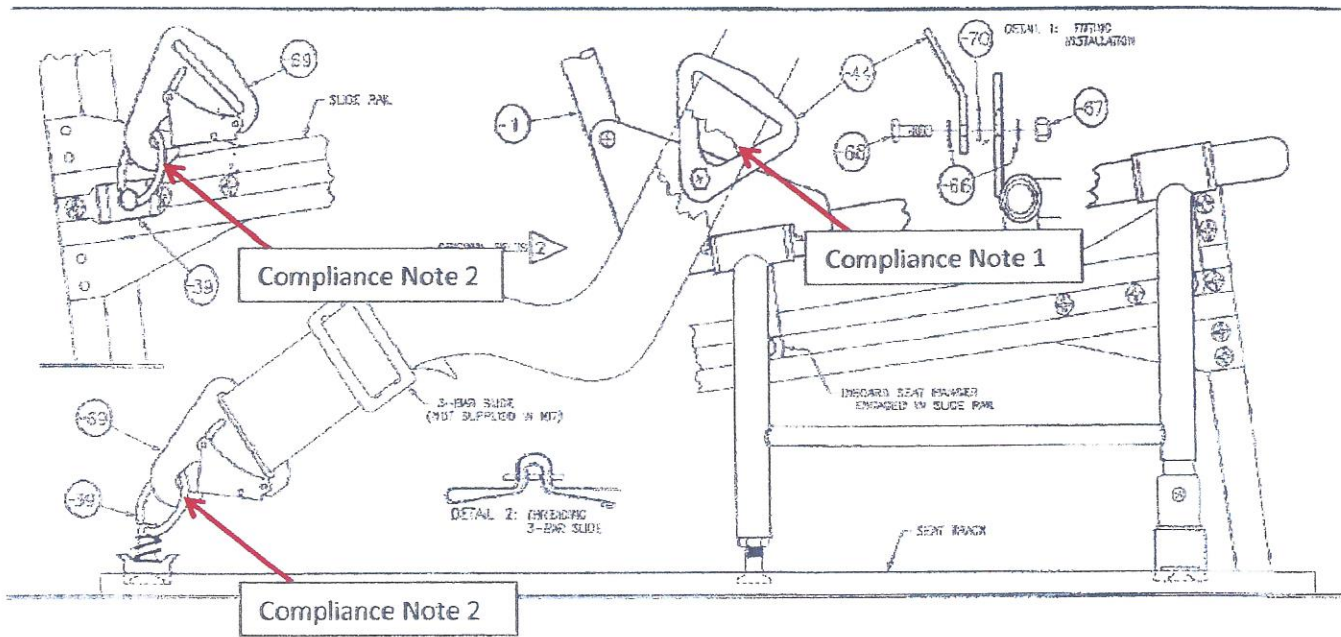


Figure 1

**Information and Parts Availability:**

Copies of MSB No. 3187-1-01 are available from F. Atlee Dodge Aircraft Services, LLC, or electronically at [www.fadodge.com](http://www.fadodge.com). Contact F. Atlee Dodge Aircraft Services, LLC for availability and pricing of replacement tie down rings, end fittings, and/or belt fittings.

United States of America  
 Department of Transportation — Federal Aviation Administration  
**Supplemental Type Certificate**

Number SA02008AK

This certificate, issued to F. Atlee Dodge  
 P. O. Box 190409  
 Anchorage, Alaska 99519-0409

IS AUTHORIZED TO INSTALL THIS MODEL ON A N S/N AUTHORIZED BY F. ATLEE DODGE SIGNATURE (SIGNATURE MUST BE SIGNED IN GREEN INK AND HAVE RAISED SEAL)

certifies that the change in the type design for the following product with the limitations and conditions therefor as specified hereon meets the airworthiness requirements of Part \* of the \*

Regulations:

Original Product — Type Certificate Number: \*  
 Make: \*  
 Model: \*

\*See attached F. Atlee Dodge Aircraft Services, Inc., Approved Model List for STC No. SA02008AK dated December 21, 1993, or later FAA approved revision for list of approved airplane models and applicable airworthiness regulations.

Description of Type Design Change:

Fabrication and installation of F. Atlee Dodge Model 3187 left-hand or right-hand removable folding jump seat; or both, in accordance with F. Atlee Dodge Aircraft Services, Inc., Master Data List No. 3187 dated October 28, 1993, or later FAA approved revision.

Limitations and Conditions: The approval of this change in type design applies to the basic aircraft models listed on F. Atlee Dodge Aircraft Services, Inc., Approved Model List for STC No. SA02008AK dated December 21, 1993, or later FAA approved revision, only. This approval should not be extended to other aircraft of these models on which other previously approved modifications are incorporated unless it is determined by the installer that the modifications will introduce no adverse effect on the airworthiness of such aircraft. This determination should include consideration of significant changes in weight distribution.

This certificate and the supporting data which is the basis for approval shall remain in effect until surrendered, suspended, revoked, or a termination date is otherwise established by the Administrator of the Federal Aviation Administration.

Date of application: October 21, 1985

Date issued:

Date of issuance: December 21, 1993

Date amended:



By direction of the Administrator

*Robert L. Miller*  
 Robert L. Miller, (Signature) Manager  
 Anchorage Aircraft Certification Office

(Title)

Any alteration of this certificate is punishable by a fine of not exceeding \$1,000, or imprisonment not exceeding 3 years, or both.

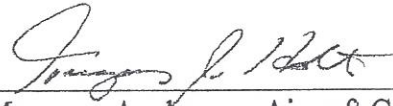
This certificate may be transferred in accordance with FAR 21.47.

**FAA Approved Model List (AML) No. SA02008AK  
for  
Installation of F. Atlee Dodge Aircraft Services, LLC  
Model 3187 Folding Jump Seat**

<b>Aircraft Make and Model Designation</b>	<b>Original Type Certificate Number</b>	<b>Certification Basis</b>
<b>Cessna</b>		
170, 170A	A-799	CAR 03
170B	A-799	CAR 3
172, 172A, 172B, 172C, 172D, 172E, 172F, 172G, 172H, 172I, 172K, 172L, 172M, 172N, 172P, 172Q	3A12	CAR 3
172R, 172S	3A12	14 CFR, part 23
R172K, 175, 175A, 175B, 175C	3A17	CAR 3
180, 180A, 180B, 180C, 180D, 180E, 180F, 180G, 180H, 180J, 180K	5A6	CAR 3
182, 182A, 182B, 182C, 182D, 182E, 182F, 182G, 182H, 182J, 182S, 182T, 182K, 182L, 182M, 182N, 182P, 182Q, 182R	3A13	CAR 3
185, 185A, 185B, 185C, 185D, 185E, A185E, A185F	3A24	CAR 3

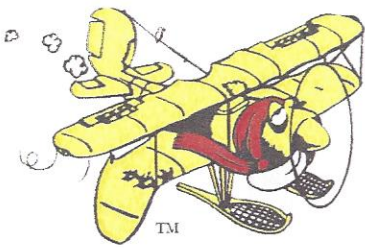
-----END-----

FAA APPROVED:

  
\_\_\_\_\_  
Manager, Anchorage Aircraft Certification Office  
Federal Aviation Administration  
Anchorage, Alaska

Approval Date: December 17, 2008





## INSTALLATION INSTRUCTIONS FOR: **CESSNA 170, 172, 175, 180, 182, 185**

Installation of one R.H. or one L.H. or Both is permissible under STC

1. Remove the rear seat or center seat, as applicable, seat belts and carpet. Remove access panels in the floor just aft of Sta. 65.33 & just forward of Sta. 90 (Sta. 92 for Models 182E & subsequent 182's).
2. Remove the side paneling behind the main cabin door and below the window, and remove any trim necessary to gain access to the bulkhead at Sta. 65.33 and Sta. 90 (Sta. 92 Models 182E & subsequent 182's).
3. Install the Slide Rail & Gussets as described on Drawing No. 3187-1, Sheet 1 of 4. Before any drilling is done it is recommended that you test fit the seat to insure correct elevation of slide rail for seat configuration.  
NOTE: As indicated on the drawing, it is important to countersink the slide rail to the full depth of the screw head; failure to do so will cause the seat to hang up when sliding in the rail.  
NOTE: On C182E and later models, slide rail might need to be trimmed.
4. Install the Support Bracket as described on Drawing No. 3187-1, sheet 2 of 4.  
NOTE: On C182E and later models P/N 3187-40 & -45 are deleted use P/N 3187-47 L&R, See drawing 3187-471 sheet 1 of 1.
5. After installation of Support Bracket, remove the slide rail and reinstall the side paneling. Refit as required. Trim the paneling in the areas where the slide rail contacts the gussets. Now reinstall the slide rail over the paneling using the specified hardware.
6. Install the seat track and angle in all aircraft (except those identified in the note below) as described on Drawing No. 3187-1, sheet 3 of 4. On C182E and later models install track on seat and slide seat on to slide rail previously installed. Align track on floor so seat moves freely. Once seat track is located on floor proceed with instructions.  
NOTE: On C182E and later models, floor track might need to be trimmed and track should not over lap skin at Sta. 65.33.
- 6A. NOTE: Instruction 6A applies only to Cessna 180 J&K S/N 18052490 & 18052621 through 18053203, and to Cessna A185F S/N 18502839 through 18504448, with the center seat belt mounting assy P/N 0711843-1 installed. Install the seat track & angle in these aircraft as described on Drawing No. 3187-1, sheet 3A of 4.

Installation of the -43 angle must have a short section removed. Measure the distance from under the floor from Sta. 65.33 to the seat belt mount assy. Transfer the measurement to the -43 angle. Remove the end of the -43 angle with milled step. Cut and angle app. 30 degree. Reprime bare metal.

NOTE: On C182E and later models the milled step goes forward.

The following two notes apply to both instructions 6 & 6A.

NOTE: As Indicated on the drawing, it is important to countersink the track to the full depth of the screw head; failure to do so will cause the set to hang up in the track.

NOTE: Read and Comply with Note 6 on sheet 3, Note 5 on sheet 3A: variations in depth of countersinks, hardware tolerance and other factors can produce variations in thread exposure under the floor - be sure you torque the nut against the floor, not against the screw shank.

**CONTINUED....**

7. If two seats are being installed, repeat steps 2 through 6 for the other side.
8. Remove all metal chips and debris from under & above the floor, then reinstall access covers.
9. Reinstall carpet and refit as required.
10. Install the seat(s) and belts as described on Drawing No. 3187-1, sheet 4 of 4.  
NOTE: On C182E and later models use aircraft Manufacture Seat Belt Attach Mounts.
11. Complete FAA Form 337 in duplicate. Reference this STC. State whether one or two seats were installed. Make proper entries in Airframe Logbook and Equipment List.

Reference: FAR 43.9 and Appendix B

12. Compute new empty Weight and Balance. Use actual weight change. C.G. location of installed folding seats is nearly the same as for the original bench seat (Sta. 72 for all applicable models). Folding seat weight (complete kit) is 8 lbs. with upholstery, 6.5 lbs. without upholstery. Insert the new Weight and Balance in the Equipment List.

**KIT PARTS LIST:** Quantities List for one seat kit, Right or Left.

Item No:	Qty:	Part No:	Description:
1	1	3187-1	SEAT ASSEMBLY, Left
	OR	3187-2	SEAT ASSEMBLY, Right
36	2	3187-36	GUSSET
37	1	3187-37 *	SLIDE RAIL
38	1	3187-38 *	SEAT TRACK
39	2	10730 **	TIE-DOWN RING (Brownline)
40	1	3187-40R/L	SUPPORT BRACKET
43	1	3187-43R/L *	ANGLE
44	2	3187-44	FITTING
45	1	3187-45R/L	BRACKET
46	2	3187-46	DOUBLER
47	2	3187-47R/L *	SUPPORT BRACKET
51	15	AN960-10L	WASHER
52	20	MS20365-1032	NUT
57	8	AN426AD3-4	RIVET
58	2	AN426AD3-7	RIVET
59	4	AN525-10R7	SCREW
60	4	AN470AD4-6	RIVET
61	5	MS21059L-3	NUT PLATE
62	19	MS24694-S52	FLUSH SCREW
63	12	CR3213-4-2	BLIND RIVET (Cherrymax)
64	2	MS24694-S53	FLUSH SCREW ***
65	1	MS24694-S100	FLUSH SCREW ****
66	3	AN960-416L	WASHER
67	3	MS20365-428	NUT
68	2	AN4-5A	BOLT
69	2	FDA1677-1M	END FITTING (Davis)
70	1	AN960-416	WASHER
71	19	AN960-10L	WASHER
72	2	MS24694-S52	FLUSH SCREW ***
73	1	MS24694-S99	FLUSH SCREW ****

\* For Models 182E and subsequent, Refer to Drawing No. 3187-471

\*\* Alternate parts may be supplied; see Drawing No. 3187-1, sheet 4 of 4

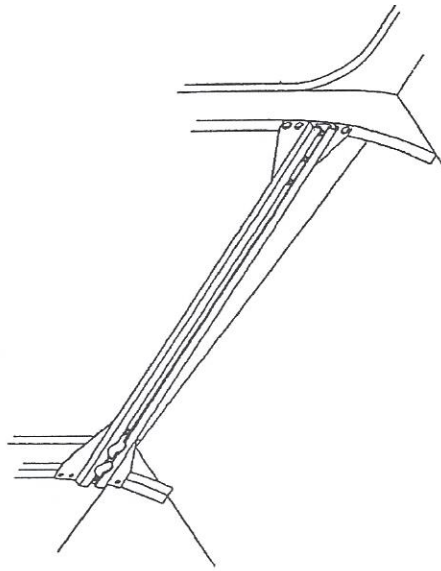
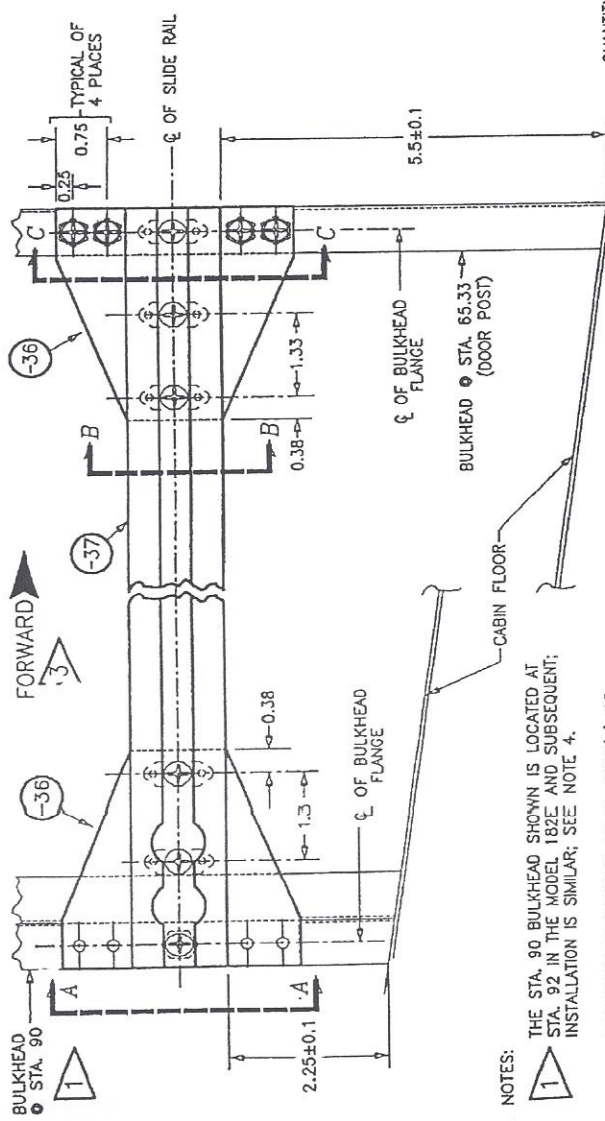
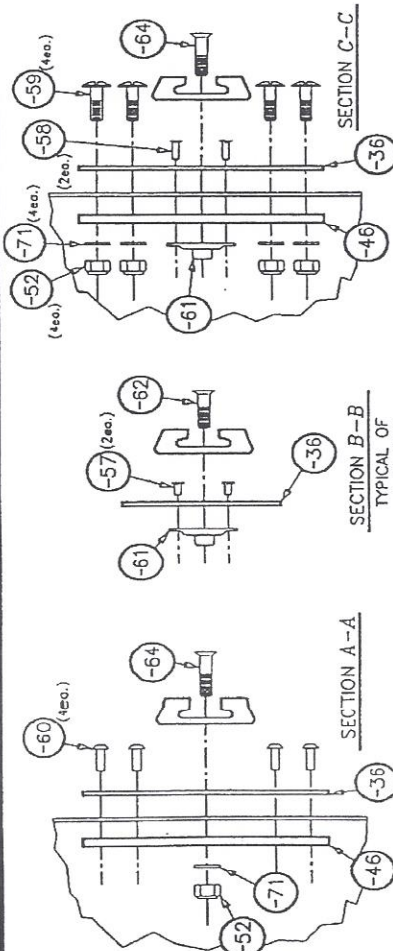
\*\*\* 72 used instead of 64 for Models 180J, 180K & A185F with P/N 0711843-1

\*\*\*\* 73 used instead of 65 for Models 180J, 180K & A185F with P/N 0711843-1



**INSTALLATION:**

1. POSITION GUSSETS (ITEM 36) DOUBLERS (ITEM 46) AND SLIDE RAIL AS SHOWN AND CLAMP IN PLACE.
2. DRILL (#11) THROUGH FORWARD GUSSET AND BULKHEAD IN FOUR PLACES FOR INSTALLATION OF SCREWS; DO NOT INSTALL SCREWS YET.
3. DRILL (#30) THROUGH AFT GUSSET AND BULKHEAD IN FOUR PLACES - DO NOT INSTALL RIVETS YET!
4. DRILL (#11) THROUGH SLIDE RAIL AND UNDERLYING STRUCTURE IN FIVE PLACES; COUNTERSINK 100° FOR INSTALLATION OF MS24694 FLUSH SCREWS (BE SURE TO COUNTERSINK TO THE PROPER DEPTH).
5. REMOVE GUSSETS, DOUBLERS, AND SLIDE RAIL. DEBURR HOLES AND ALDOYNE PRIME GUSSETS (SEE NOTE 2).
6. INSTALL FORWARD GUSSET AND DOUBLER USING SPECIFIED SCREWS, NUTS AND WASHERS (FOUR EACH ITEMS 59, 52, AND 71). REMOVE THE 'ADEL' CLAMP HOLDING THE FUEL LINE ADJACENT TO THE ITEM 59 SCREWS, TURN IT 180°, AND REINSTALL IT SO THE FUEL LINE CLEARS THE SCREWS. ON MODELS WITH CABLE-OPERATED WING FLAPS, ADJUST THE POSITION OF THE RELOCATED FUEL LINE TO MAKE CERTAIN IT CLEARS THE FLAP CABLE.
7. INSTALL AFT GUSSET AND DOUBLER USING FOUR RIVETS (ITEM 60), NUTPLATE, DRILL TWO #40 HOLES, COUNTERSINK 100°, AND INSTALL USING RIVETS AS SPECIFIED.
8. INSTALL SLIDE RAIL USING FIVE FLUSH SCREWS; USE A NUT AND WASHER TO INSTALL THE AFT-MOST SCREW.



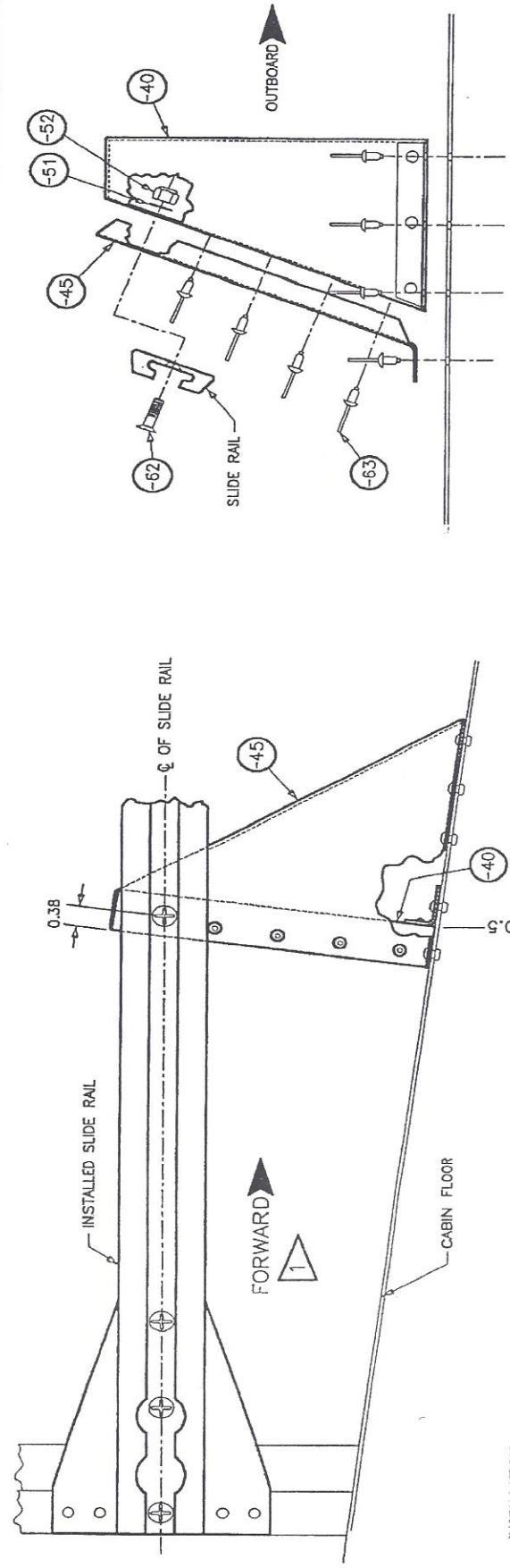
**QUANTITIES LISTED FOR INSTALLATION OF ONE SEAT KIT, LEFT OR RIGHT**

ITEM	QTY	PART NO.	DESCRIPTION
-36	2	3187-36	GUSSETS
-37	1	SEE NOTE 4	SLIDE RAIL
-46	2	3187-46	DOUBLER
-52	5	MS20365-1032	NUT
-57	8	AN428A03-4	RIVETS
-58	2	AN428A03-7	RIVETS
-59	4	AN525-10R7	SCREW
-60	4	AN470A04-6	RIVETS
-61	5	MS21059-L3	NUTPLATES
-62	4	MS24694-S52	FLUSH SCREWS
-64	2	MS24694-S53	FLUSH SCREWS
-71	5	AN960-10	WASHER

1. THE STA. 90 BULKHEAD SHOWN IS LOCATED AT STA. 92 IN THE MODEL 182E AND SUBSEQUENT; INSTALLATION IS SIMILAR; SEE NOTE 4.
2. USE PRIMER PER SPEC. TT-P-600B(2) OR TT-P-1757, OR DUPONT CO. ROLAR 824S OR 825S, OR VARIPRIMER SELF-ETCHING PRIMER 615S WITH VARIPRIMER CONVERTER 618S.
3. LEFT SIDE INSTALLATION SHOWN; RIGHT SIDE INSTALLATION IS OPPOSITE.
4. SLIDE RAIL PART NUMBERS ARE AS FOLLOWS:
 

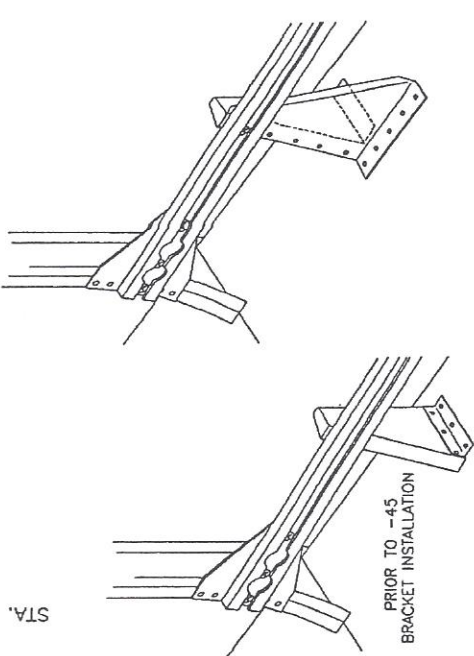
MODEL	SLIDE RAIL P/N
182E AND SUBSEQUENT	3187-38-82
ALL OTHER APPLICABLE A/C	3187-38

A ADD TEXT TO STEP NO. 6 AND CORRECT NOTE 2 (6165) 3/11/96 MHL	REVISION DATE INIT F. Atlee Dodge P.O. BOX 190409 ANCHORAGE AK 99519
<b>FOLDING JUMP SEAT INSTALLATION</b>	
CESSNA 170,172,175,180,182,& 185 TOL: .x = ±.1; .xx = ±.05; .xxx = ±.01; .x = ±.3 DR: M. Lovell DATE: 10-28-93 SCALE: NTS AP: F. Atlee Dodge/DWC: 3187-1 SHEET: 1 OF 4	



INSTALLATION:

1. POSITION SUPPORT BRACKET (P/N 3187-40L OR 3187-40R, AS APPLICABLE) AT FUSELAGE STA. 80, BETWEEN THE SLIDE RAIL AND THE FUSELAGE WALL, AS SHOWN; CLAMP THE SUPPORT BRACKET AT ITS TOP INBOARD FLANGE TO THE SLIDE RAIL.
2. DRILL (#30) THROUGH THE THREE PILOTED HOLES IN THE SUPPORT BRACKET BOTTOM ANGLE, THROUGH THE CABIN FLOOR. INSTALL THREE CR3213-4-2 RIVETS.
3. REMOVE CLAMP AND POSITION BRACKET (P/N 3187-45L OR 3187-45R, AS APPLICABLE) BETWEEN SLIDE RAIL AND INSTALLED SUPPORT BRACKET, AS SHOWN. CLAMP THE -45 BRACKET TO THE CENTERLINE OF RAIL AND BOTH BRACKETS. COUNTERSINK THE SLIDE RAIL 100° (BE SURE TO CNSK TO PROPER DEPTH) THEN INSTALL MS24694-52 SCREW, AN960-10L WASHER, AND MS20365-1032 NUT.
4. DRILL (#30) THROUGH 9 PILOTED HOLES IN -45 BRACKET, THROUGH SUPPORT BRACKET INBOARD FLANGE AND CABIN FLOOR. INSTALL 9 CR3213-4-2 RIVETS.



QUANTITIES LISTED FOR INSTALLATION OF ONE SEAT KIT, LEFT OR RIGHT; SEE NOTE 1

ITEM	QTY	PART NO.	DESCRIPTION
-40	1	3187-40R/L	SUPPORT BRACKET
-45	1	3187-45R/L	BRACKET
-51	1	AN960-10L	WASHER
-52	1	MS20365-1032	NUT
-62	1	MS24694-52	FLUSH SCREWS
-63	12	CR3213-4-2	BLIND RIVET (CHERRYMAX)

NOTES:



1 LEFT SIDE INSTALLATION (SHOWN) USES ONE P/N 3187-40L AND ONE P/N 3187-45L. RIGHT SIDE INSTALLATION (NOT SHOWN) IS OPPOSITE AND USES ONE P/N 3187-40R AND ONE P/N 3187-45R.

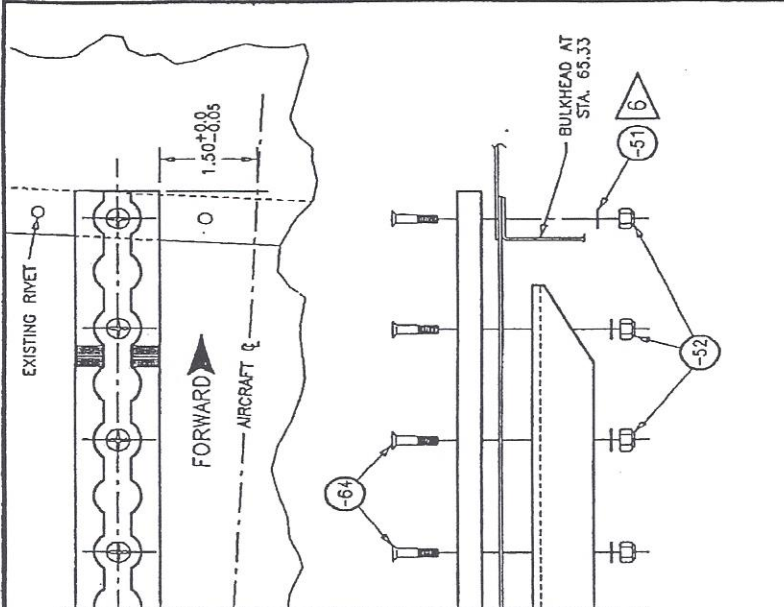
LET	REVISION	DATE	INIT

F. Atlee Dodge  
P.O. BOX 190409  
ANCHORAGE AK 99519

### FOLDING JUMP SEAT INSTALLATION

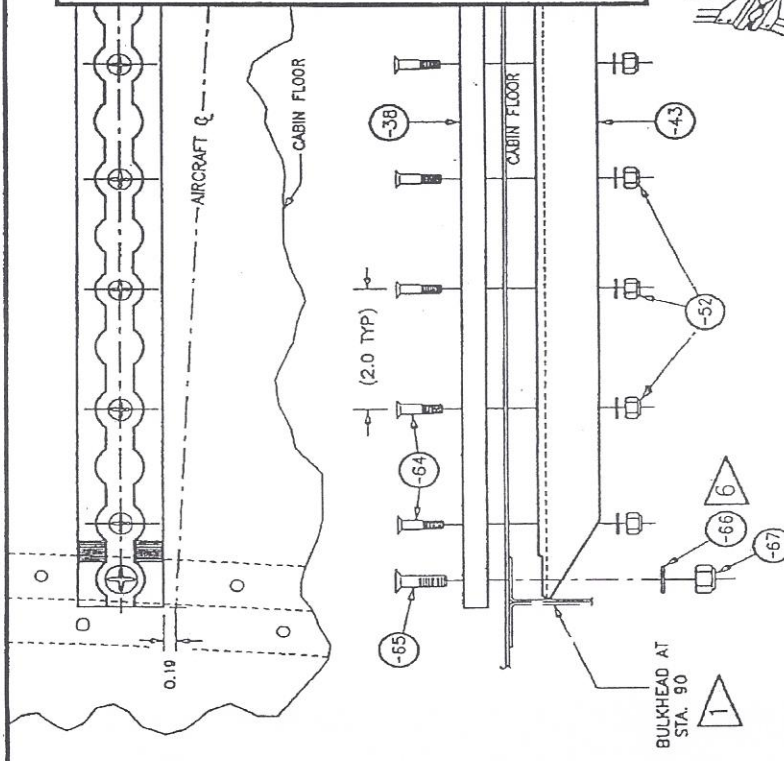
CESSNA 170,172,175,180,182 & 185  
TOL.: X=±.1; YY=±.05; XXX=±.01; Z=±.3  
DR: M. Lovett DATE: 6-30-93 SCALE: NTS  
AP: F. Atlee Dodge DWG: 3187-1  
SHEET: 2 OF 4





**INSTALLATION:**

1. REMOVE THE CESSNA CENTER SEAT BELT ATTACH BRACKET P/N 0711083-1 FROM THE FLOOR AND THE NUTPLATE P/N NAS69744 UNDER THE FLOOR. POSITION THE SEAT TRACK ON THE FLOOR (NOTE THE FORWARD END IS MARKED ON THE BOTTOM). DRILL (#11) 12 PLACES; DRILL (1/4") 1 PLACE.
- NOTE: ANY PROTRUDING RIVET HEADS FALLING UNDER THE TRACK MUST BE REMOVED AND REPLACED WITH A FLUSH RIVET OF PROPER SIZE AND LENGTH.
3. MARK A CENTER LINE ON ANGLE (ITEM -43) TO ALLOW ALIGNMENT WITH DRILLED HOLES IN FLOOR. WORKING THROUGH ACCESS HOLE AT STA. 86.5, PLACE THE ANGLE IN POSITION UNDER FLOOR. THE ANGLE SHOULD FIT SNUG AGAINST THE BULK-HEAD AT STA. 90 - TRIM ANGLE IF REQ'D. WITH ANGLE IN PLACE MARK 1 HOLE NEAR EACH END USING A #11 DRILL BIT. REMOVE ANGLE AND DRILL (#11) THROUGH 2 MARKED LOCATIONS. REINSTALL ANGLE USING 2 CLECOS THEN MATCH DRILL ALL HOLES THROUGH ANGLE.
4. COUNTERSINK ALL HOLES IN TRACK (BE SURE TO CNSK TO PROPER DEPTH). DEBURR ALL HOLES AND ALDOWNE TRACK AND ANGLE; PRIME UNDERSIDE OF TRACK AND ENTIRE ANGLE (SEE NOTE 2).
5. INSTALL THE TRACK AND ANGLE USING HARDWARE AS SPECIFIED (USE TORQUE VALUES PER AC 43.13-1A, CH 5, FIG 5.2). SEE NOTE 6.



NOTES:

- 1 THE STA. 90 BULKHEAD SHOWN IS LOCATED AT STA. 92 IN THE MODEL 182E AND SUBSEQUENT; INSTALLATION IS SIMILAR; SEE NOTES 4 & 5
- 2 USE PRIMER PER SPEC. TT-P-6008(2) OR TT-P-1757, OR DUPONT CORLAR 8245 OR 8255, OR VARIPRIMER SELF-ETCHING PRIMER 6155 WITH VARIPRIMER CONVERTER 6165
- 3 LEFT SIDE INSTALLATION (SHOWN) USES ANGLE P/N 3187-43L; RIGHT SIDE INSTALLATION (NOT SHOWN) IS OPPOSITE AND USES ONE ANGLE P/N 3187-43R (SEE NOTE 5)
- 4 SEAT TRACK PART NUMBERS ARE AS FOLLOWS:

MODEL	SEAT TRACK P/N
182E AND SUBSEQUENT	3187-38-82
ALL OTHER APPLICABLE A/C	3187-38

ANGLE PART NUMBERS ARE AS FOLLOWS:

MODEL	ANGLE P/N
182E AND SUBSEQUENT	3187-43R/L-82
ALL OTHER APPLICABLE A/C	3187-43R/L

QUANTITIES LISTED FOR INSTALLATION OF ONE SEAT KIT, LEFT OR RIGHT; SEE NOTE 3  
 \*QUANTITY REQ'D FOR MODEL 182E AND SUBSEQUENT; OTHER MODELS REQUIRE ONE LESS

ITEM	QTY	PART NO.	DESCRIPTION
-38	1	SEE NOTE 4	SEAT TRACK
-43	1	SEE NOTE 5	ANGLE
-51	*14	AN960-10L	WASHER
-52	*14	MS20365-1032	NUT
-65	1	MS24694-552	FLUSH SCREW
-66	1	AN960-416L	WASHER
-67	1	MS20365-428	NUT
-70	1	AN960-416	WASHER-SEE NOTE 6
-71	*14	AN960-10	WASHER-SEE NOTE 6

6 IN SOME INSTALLATIONS STANDARD OR ADDITIONAL WASHERS MAY BE REQUIRED ON SOME OR ALL SCREWS - INSTALLER MUST VERIFY THAT NUT WILL NOT BOTTOM-OUT ON THREAD. KIT INCLUDES SUFFICIENT QUANTITIES TO INSTALL ONE STANDARD AND ONE THIN WASHER UNDER EACH NUT.

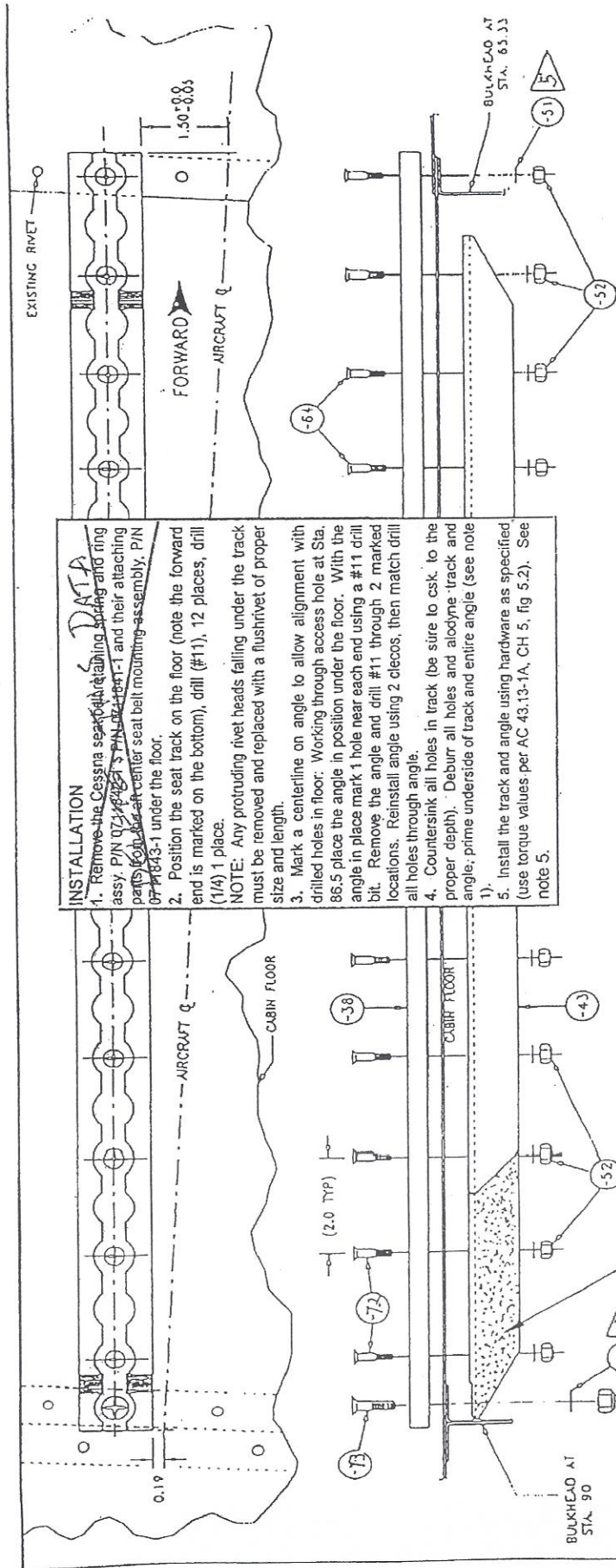
LET	REVISION	DATE	MWL
A	CORRECTED NOTE 2 (6165)	3/11/96	INIT

F. Atlee Dodge  
 P.O. BOX 190409  
 ANCHORAGE AK 99519

### FOLDING JUMP SEAT INSTALLATION

CESSNA 170,172,175,180,182,& 185  
 TOL: x=±.1; y=±.05; z=±.01; x'=±.3  
 DR: M. Lovell DATE: 10-28-93 SCALE: NTS  
 AP: F. Atlee Dodge DWG: 3187-1

SHEET: 3 OF 4



**INSTALLATION**

1. Remove the Cessna seat retaining spring and ring assy. PIN 07-1843-1 and their attaching parts from the seat belt mounting assembly. PIN 07-1843-1 under the floor.

2. Position the seat track on the floor (note the forward end is marked on the bottom), drill (#11), 12 places, drill (1/4) 1 place.

NOTE: Any protruding rivet heads falling under the track must be removed and replaced with a flushrivet of proper size and length.

3. Mark a centerline on angle to allow alignment with drilled holes in floor. Working through access hole at Sta. 86.5 place the angle in position under the floor. With the angle in place mark 1 hole near each end using a #11 drill bit. Remove the angle and drill #11 through 2 marked locations. Reinstall angle using 2 clecos, then match drill all holes through angle.

4. Countersink all holes in track (be sure to csk. to the proper depth). Deburr all holes and alodine track and angle, prime underside of track and entire angle (see note 1).

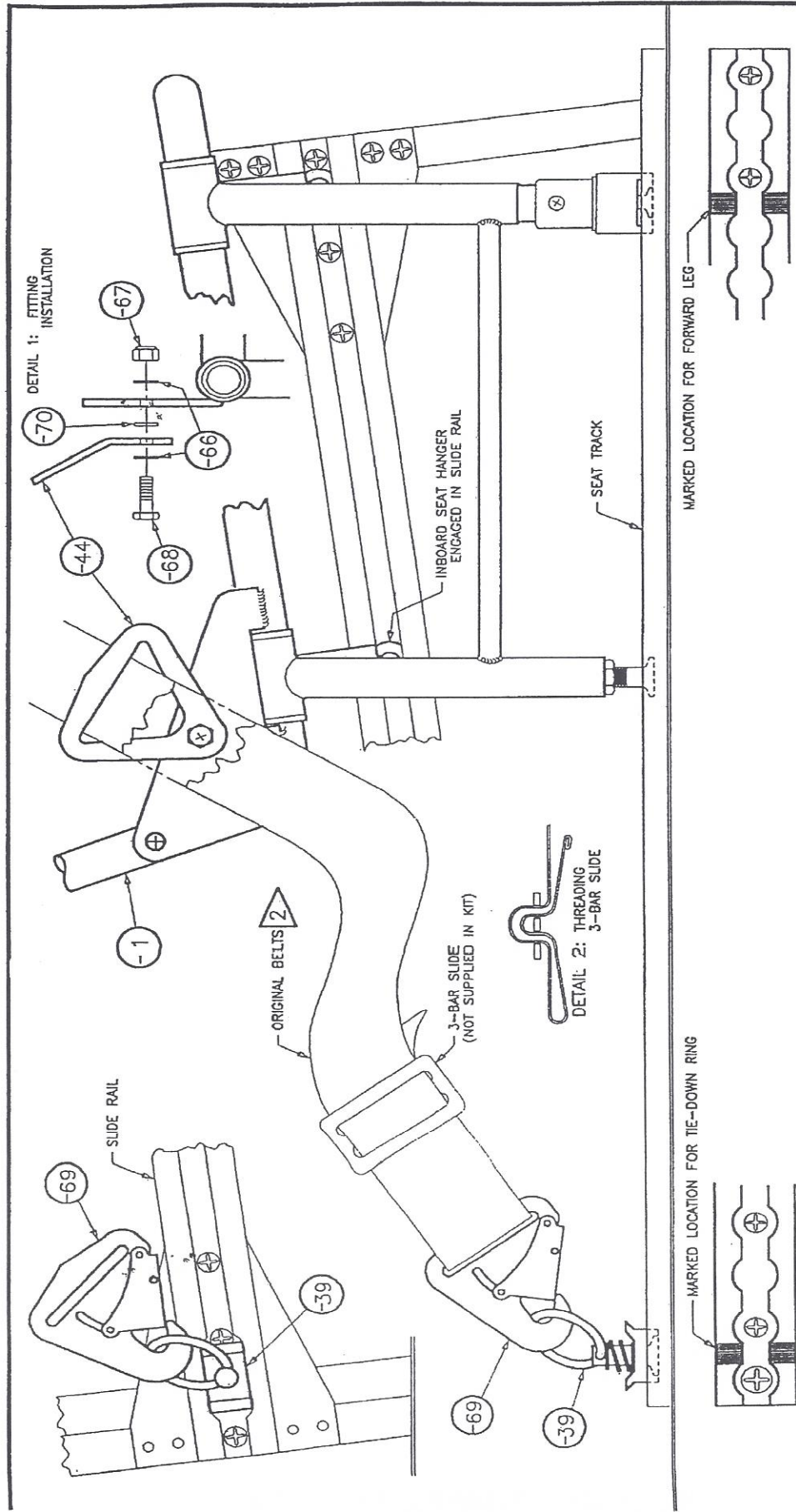
5. Install the track and angle using hardware as specified (use torque values per AC 43-13-1A, CH 5, fig 5.2). See note 5.

**NOTES**

- 1 USE PRIMER PER SPEC. TT-P-600B(2) OR TT-P-1757, OR DUPONT CORLAR 824S OR 825S, OR VARIPRIMER SELF-ETCHING PRIMER 615S WITH VARIPRIMER CONVERTER 615S.
- 2 LEFT SIDE INSTALLATION (SHOWN) USES ANGLE PIN 3187-43L; RIGHT SIDE INSTALLATION (NOT SHOWN) IS OPPOSITE AND USES ONE ANGLE PIN 3187-43R (SEE NOTE 4)
- 3 SEAT TRACK PIN 3187-38
- 4 ANGLE PIN 3187-43 L/R
- 5 IN SOME INSTALLATIONS STANDARD OR ADDITIONAL WASHERS MAY BE REQUIRED ON SOME OR ALL SCREWS — INSTALLER MUST VERIFY THAT NUT WILL NOT BOTTOM-OUT ON THREAD. KIT INCLUDES SUFFICIENT QUANTITIES TO INSTALL ONE STANDARD AND ONE THIN WASHER UNDER EACH UNIT.

F. Allee Dodge P.O. BOX 190409 ANCHORAGE, AK 99519	
<b>FOLDING JUMP SEAT INSTALLATION</b>	
Cessna 180L, 180K, A185F	
TOL A = ±.1, XAX = ±.05, XAXX = ±.01, R = ±.1	
Date 7-2-97	Sheet 1A of 4
	DWG 3187-1





QUANTITIES LISTED FOR INSTALLATION OF ONE SEAT KIT, LEFT OR RIGHT; SEE NOTE 1

ITEM	QTY	PART NO.	DESCRIPTION
-1	1	3189-1 (or -2)	SEAT ASSY
-39	2	10730 (BROWNLINE) OR ALTERNATE: 40340-20 OR 40340-24 (ANCR)	TIE-DOWN RING
-44	2	3189-44	FITTING
-66	4	AN960-416L	WASHER
-67	2	MS20355-428	NUT
-68	2	AN4-5A	BOLT
-69	2	FDA1677-1M	END FITTING (DAVS P/N)
-70	2	AN960-416	WASHER

- INSTALLATION:
- INSTALL SEAT: SLIDE OUT/ID SEAT HANGERS INTO SLIDE RAIL; ENGAGE IN/ID AFT LEG IN SEAT TRACK; LOCK IN/ID FORWARD LEG FITTING INTO SEAT TRACK AT MARKED LOCATION. ADJUST AFT LEG LENGTH BY TURNING THE STUD IN OR OUT AS REQUIRED; TORQUE JAW NUT TO 95-110 IN-LB.
  - INSTALL 2 FITTINGS P/N 3187-44 ON SEAT PER DETAIL 1.
  - INSTALL 1 TIE-DOWN RING (ITEM -39) IN THE SEAT TRACK AT THE MARKED LOCATION (AFT END). INSTALL 1 TIE-DOWN RING IN THE SLIDE RAIL AT THE AFT END.
  - REPLACE END FITTINGS ON ORIGINAL SEAT BELTS WITH END FITTING P/N FDA1677-1M (SUPPLIED IN KIT); USE ORIGINAL 3-BAR SLIDE (SEE DETAIL 2).
  - PASS BELTS THROUGH FITTINGS (P/N 3187-44) ON SEAT AND ATTACH TO TIE-DOWN RINGS. SEE NOTE 2.

NOTES:

1 LEFT SIDE INSTALLATION (SHOWN) USES SEAT ASSY P/N 3187-1; RIGHT SIDE INSTALLATION (NOT SHOWN) IS OPPOSITE AND USES SEAT ASSY P/N 3187-2

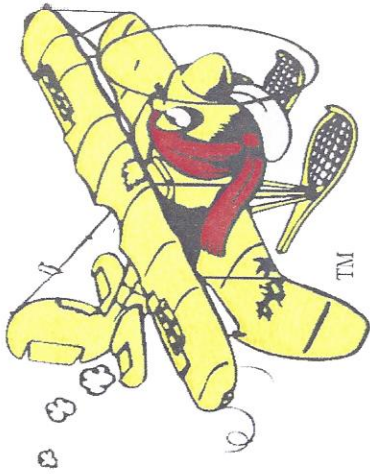
2 SEAT BELTS MUST COMPLY WITH TSO-C221 OR LATER FAA-APPROVED REVISION AND MUST HAVE A SEWED-ON DATA PATCH

A. AMEND NOTE 2 (TSO REV) 3/11/96/NWL  
 LET REVISION DATE INIT

F. Atlee Dodge  
 P.O. BOX 190409  
 ANCHORAGE AK 99519

FOLDING JUMP SEAT  
 INSTALLATION

CESSNA 170,172,175,180,182,& 185  
 TOL: X=±.1; Y=±.05; Z=±.01; X'=±.3  
 DR: M. Lovell DATE: 10-28-93 ISCALE: NTS  
 AP: F. Atlee Dodge DWG: 3187-1  
 SHEET: 4 OF 4



**F. Atlee Dodge Aircraft Services, LLC.**

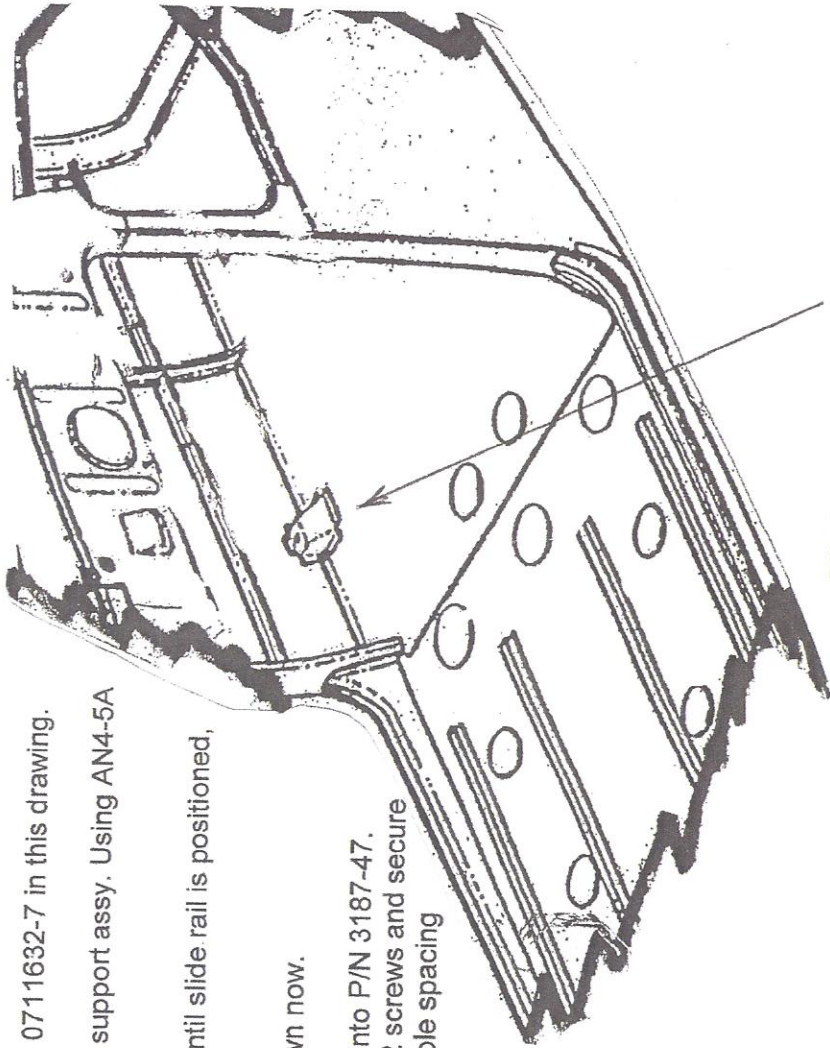
6672 Wes Way - Anchorage, AK 99518 - Phone: (907) 344-1755 - Fax: (907) 344-6720  
Email: [atleedodge@acsalaska.net](mailto:atleedodge@acsalaska.net) - Website: [www.fadodge.com](http://www.fadodge.com)



Cessna C182E and Later  
Supplement Installation Drawings  
For P/N 3187-47 L & R

Document No: 3187-471  
Revision: A  
Date: August 3, 2005  
Sheet 1 of 1

1. Locate support assy. For Cessna rear seat P/N 0711632-7 in this drawing.
2. Position support bracket P/N 3187-47 on top of support assy. Using AN4-5A bolt supplied in kit.
3. **DO NOT TIGHTEN DOWN AT THIS TIME!!!!** Until slide rail is positioned, trimmed and installed.
4. Support bracket P/N 3187-47 can be bolted down now.
5. 2 Holes need to be drilled through the slide rail into P/N 3187-47. Counter sink the holes to accept 2 MS2492-S52 screws and secure rail to bracket using hardware provided in kit. Hole spacing in slide rail should be approximately 1" C/C with 1/2" edge distance on support bracket 3187-47



**CESSNA P/N 0711632-7  
REAR SEAT SUPPORT BRACKET MOUNT**